



**Series V67-4H**

## **COMBINED SHAKER CENTRIFUGE VIBRAFUGE**

The series V67-4H vibrafuge combines a laboratory centrifuge and an electrodynamic shaker for complex mechanical stress generation.

The centrifuge base made of pre-stressed concrete and the centrifuge arm technology are directly derived from **ACTIDYN SYSTEMES** civil engineering centrifuge technology in operation worldwide.

The shaker armature automatic balancing, the centrifuge arm automatic balancing and decoupling are also derived from technology and know-how developed for earthquake simulators embarked on large centrifuges.

The all digital shaker control system and the shaker power controller are installed on the centrifuge arm and connected to the controller human interface via a high speed Ethernet connection using a noise free optical fiber connection.

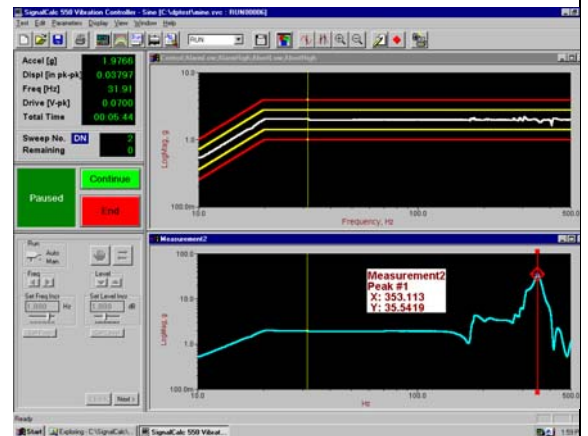
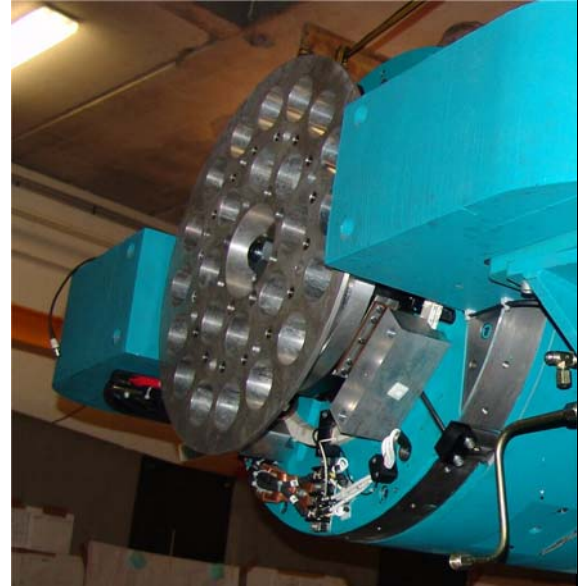
Digital remote interfaces available are:

- Ethernet
- IEEE 488
- RS232 / RS422
- I/O analog input/output

Based upon its 30 years of experience, **ACTIDYN SYSTEMES** team of engineers has designed a family of high performance simulators, which combines quality and high performances at low cost that are conceived to satisfy customers needs.

## COMBINED SHAKER CENTRIFUGE VIBRAFUGE

Model	V67-4-H	Units
Centrifuge nominal radius	4.0	m
Shaker extender diameter	0.7	m
Maximum payload mass	120	kg
Maximum payload length	0.6	m
System total mass	27000	kg
Acceleration range	5 to 80	g
	50 to 800	m/s <sup>2</sup>
<b>Acceleration control</b>		
Range	5 to 800	m/s <sup>2</sup>
Acceleration accuracy	+/-10	m/s <sup>2</sup>
g on set (5 to 80 g)	10	min
Command resolution	1	m/s <sup>2</sup>
Readout resolution	0.1	m/s <sup>2</sup>
Rotating speed	135	rpm
<b>Shaker performance</b>		
Shaker force	48	kN
Armature resonance frequency	1800	Hz
Operating frequency range	0 to 2000	Hz
No load armature moving mass	80	kg
Full load moving mass	200	kg
Full load acceleration sine	20	g
Full load acceleration random	20	g <sub>rms</sub>
Full load shock duration 2 ms	50	g <sub>peak</sub>
<b>Shaker control modes</b>		
Sine		
Random		
Shock		
Multi-sine		
Transient		
<b>Power requirement</b>		
Line voltage	210 to 410	V
Installed power	350	kVA
Frequency	50 or 60	Hz
Number of phase	3	



**ACTIDYN SYSTEMES ALSO MANUFACTURE THESE EQUIPMENTS TO BETTER SERVE YOU**

