

Series C68-2

OUTDOOR CENTRIFUGE FOR ROCKET TESTING

The series C68 centrifuge is a very crude yet accurate open door laboratory centrifuge designed for the life test of powder rocket thrusters.

AC brushless motor technology delivers high dynamic performances and maintenance free operation. Unit shown on above picture is over 40 years of operation and still active.

Several models and options are available:

- Customized electrical slip-rings
- Optical fiber rotary joint and modems
- Fluid rotary joints

The new generation of control system **AXIDYN LT** includes the following operating modes: DC linear acceleration and sinusoidal g profiles.

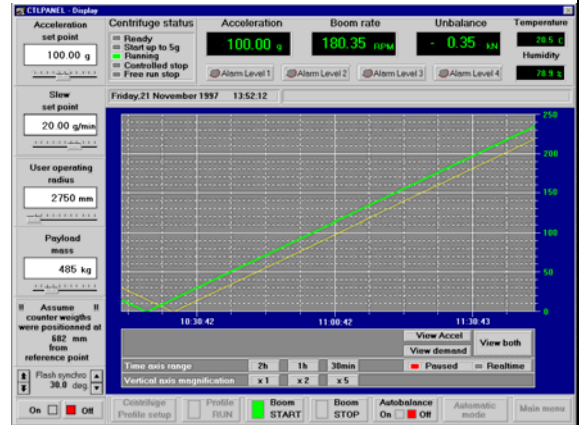
Optional remote interfaces available are:

- Ethernet
- IEEE 488
- USB port
- RS232 / RS422
- I/O analog input/output

Based upon its 30 years of experience, **ACTIDYN SYSTEMES** team of engineers has designed a family of high performance simulators, which combines quality and high performances at low cost that are conceived to satisfy customers needs.

OUTDOOR CENTRIFUGE FOR ROCKET TESTING

Model	C68-2	Units
Chamber diameter	6.0	m
Chamber height	4.0	m
Wall thickness	0.6	m
System total mass	8500	kg
Acceleration range	5 to 80 50 to 800	g m/s ²
Centrifuge radius nominal	4.0	m
Manual indexing basket	800 x 800	mm
Indexing angle	45	°
Maximum payload mass	500	kg
Rotating speed	140	rpm
Maximum g'force	400000	kN
Permanent unbalance max	150000	kN
Acceleration command		
Range	0.1 to 800	m/s ²
Acceleration accuracy	+/- 2	m/s ²
Command resolution	0.1	m/s ²
Readout resolution	0.1	m/s ²
G on set	10	g/min
Power requirement		
Line voltage	220 to 410	V
Installed power	200	kVA
Frequency	50 or 60	Hz
Nb of phase	3	
Centrifuge environment		
Operating temperature	-20 to + 50	°C
Storage temperature	-40 to + 70	°C
Humidity (non condensing)	80	%
Accessories on option		
<i>Signal slip rings</i>		
Quantity	30 to 150	
Voltage	110	V _{DC}
Dynamic resistance (rms noise)	10	mΩ
<i>Power slip rings</i>		
Quantity	4	
Voltage	410	V _{DC}
Intensity	Up to 200	A
<i>Hydraulic rotary joint</i>		
Operating pressure	Up to 2000	HPa
Optical fiber Ethernet hub	1	giga bit/s



ACTIDYN SYSTEMES ALSO MANUFACTURE THESE EQUIPMENTS TO BETTER SERVE YOU

